



# Joint Workshop of European Projects on Automated Road Transport

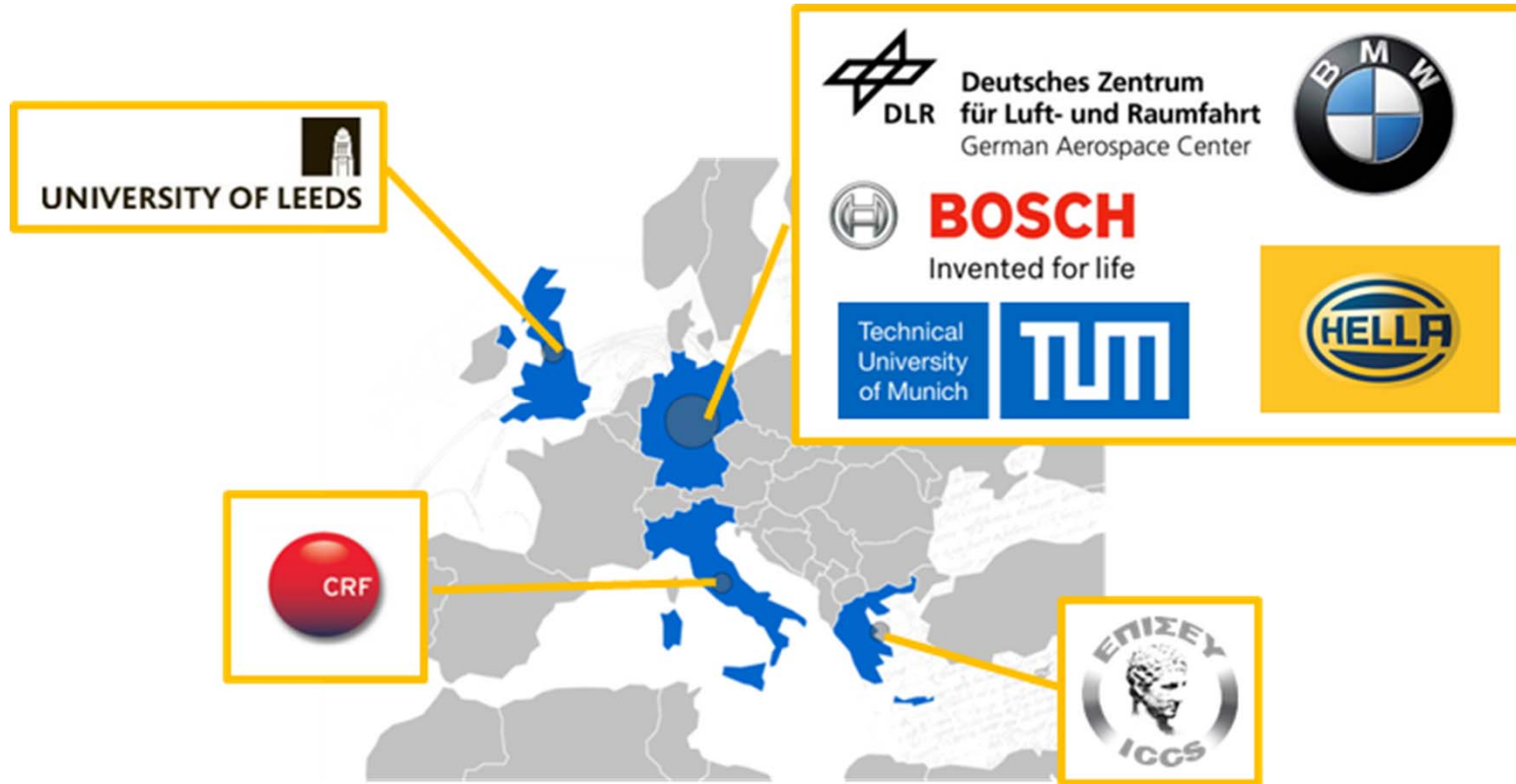
The EU project interACT



CARTRE and SCOUT are funded by  
the European Union Horizon 2020  
Work Programme



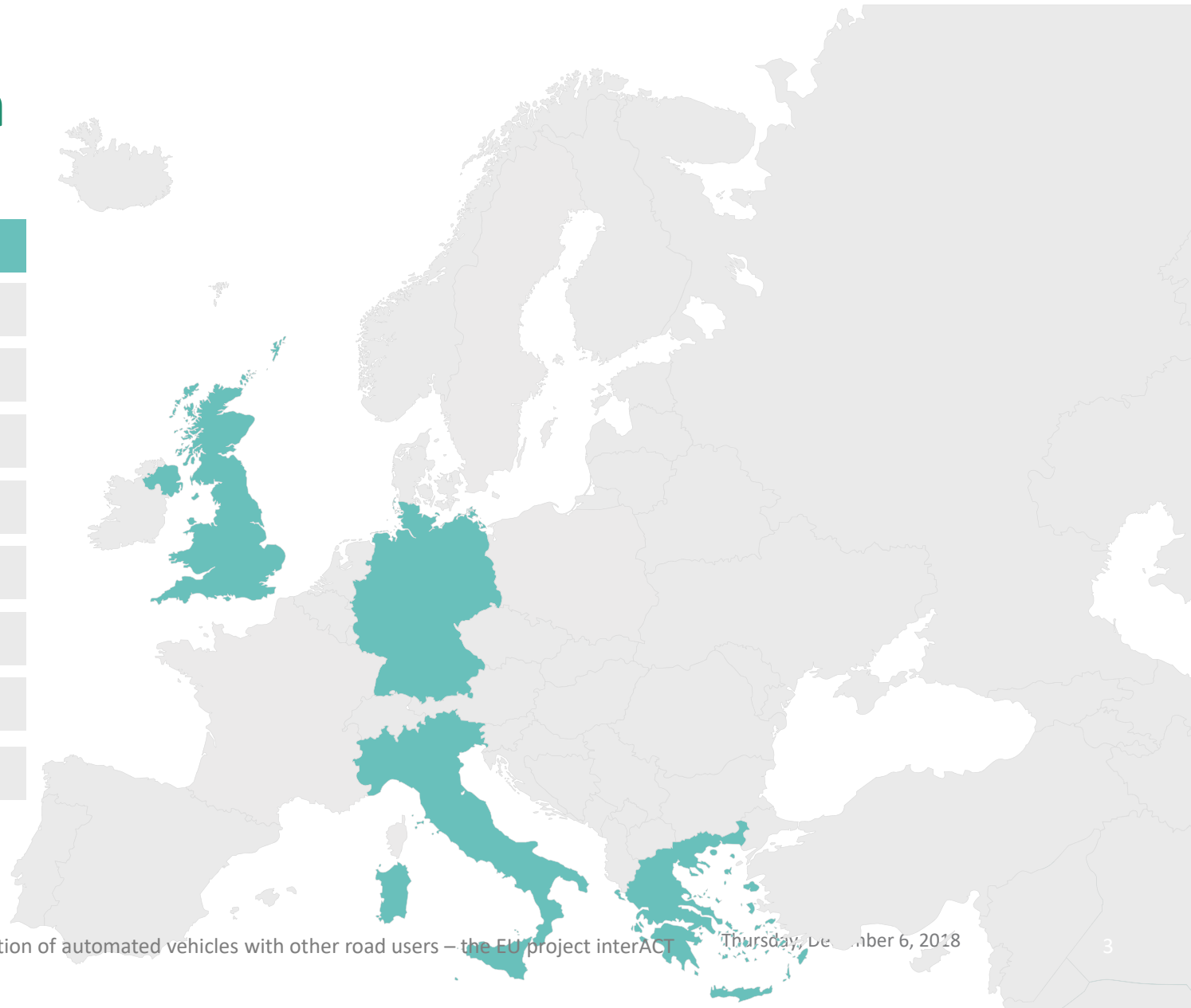
# Project consortium



# Project consortium

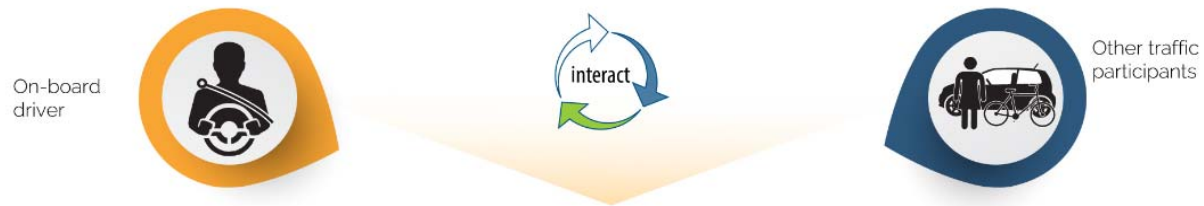
## Partners location

DE	DLR
DE	Bosch
DE	BMW
DE	TUM
DE	HELLA
GR	ICCS
GB	University of Leeds
IT	CRF

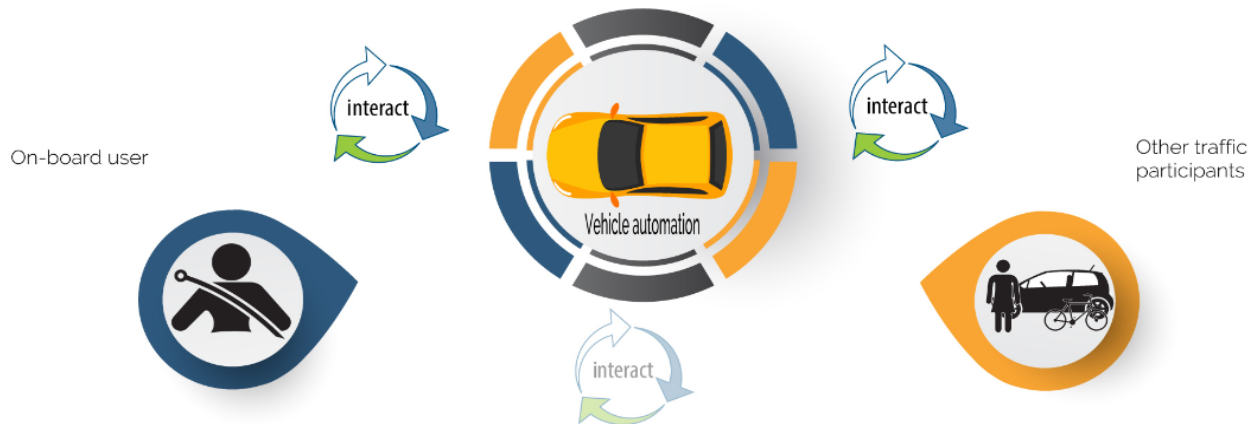


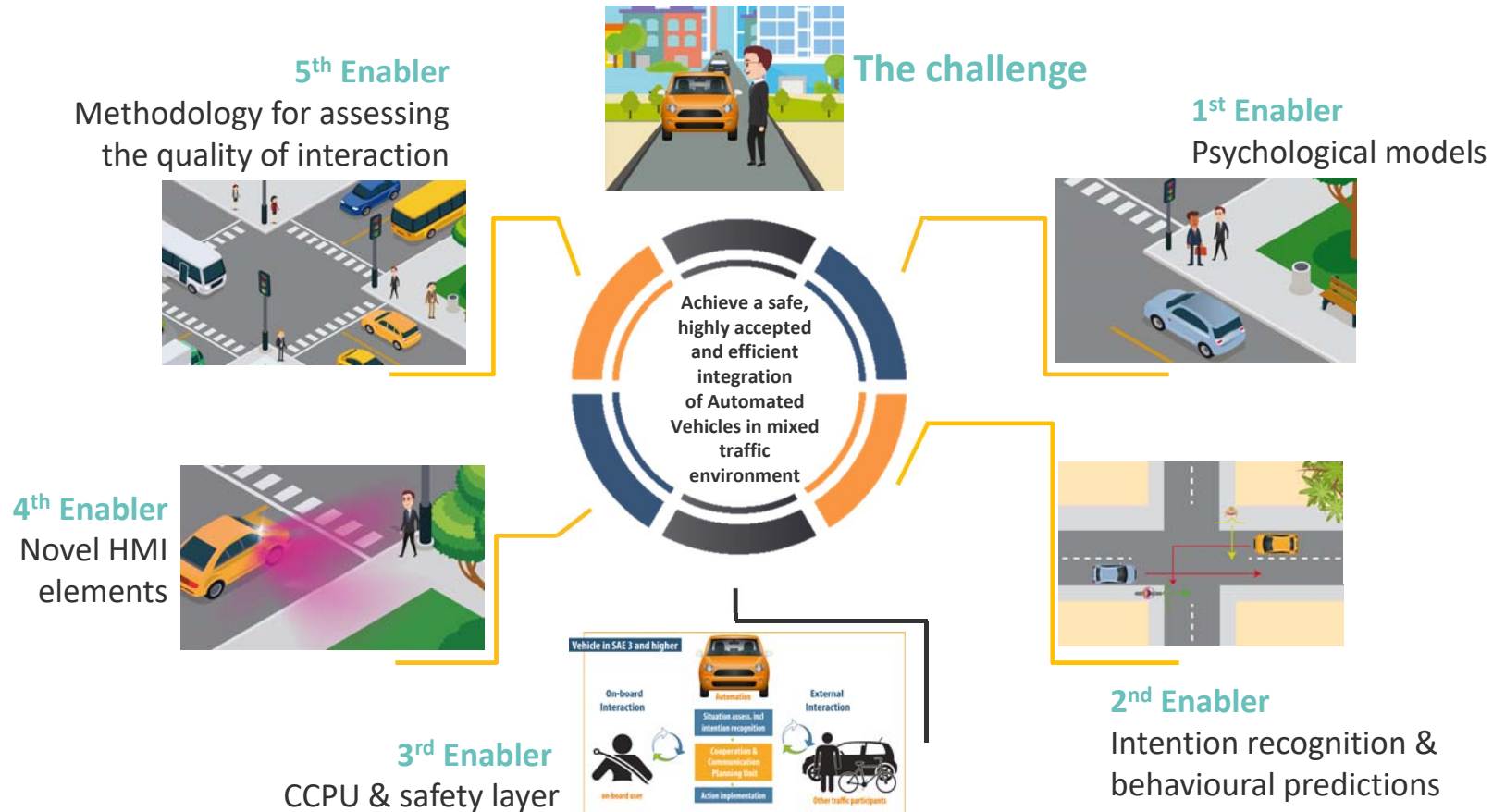
# Integrating automated vehicles in mixed traffic

## Situation Today



## Future situation: Automated vehicles in mixed traffic environments





# Use cases and Scenarios

## interACT

Marc Wilbrink, DLR

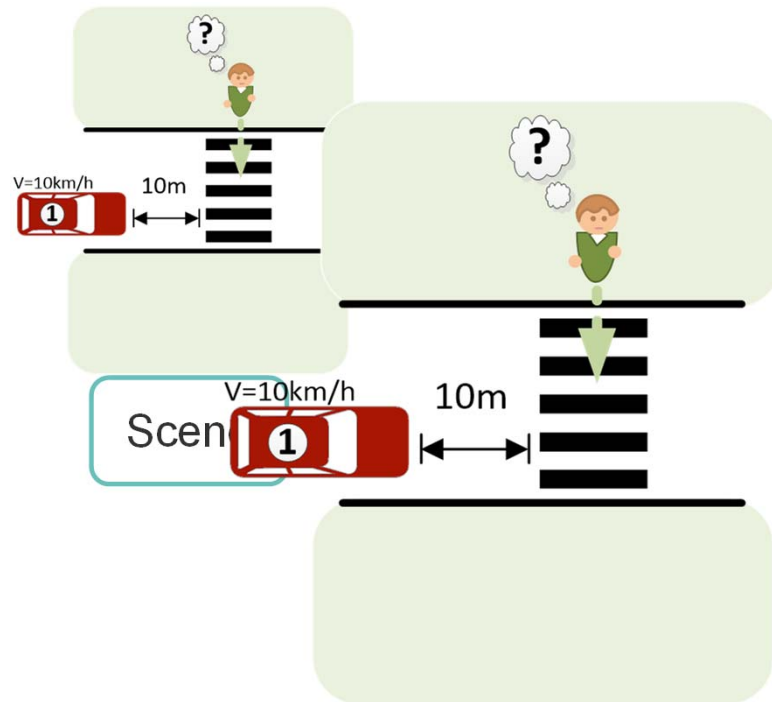
Marc.wilbrink@dlr.de



# Definition



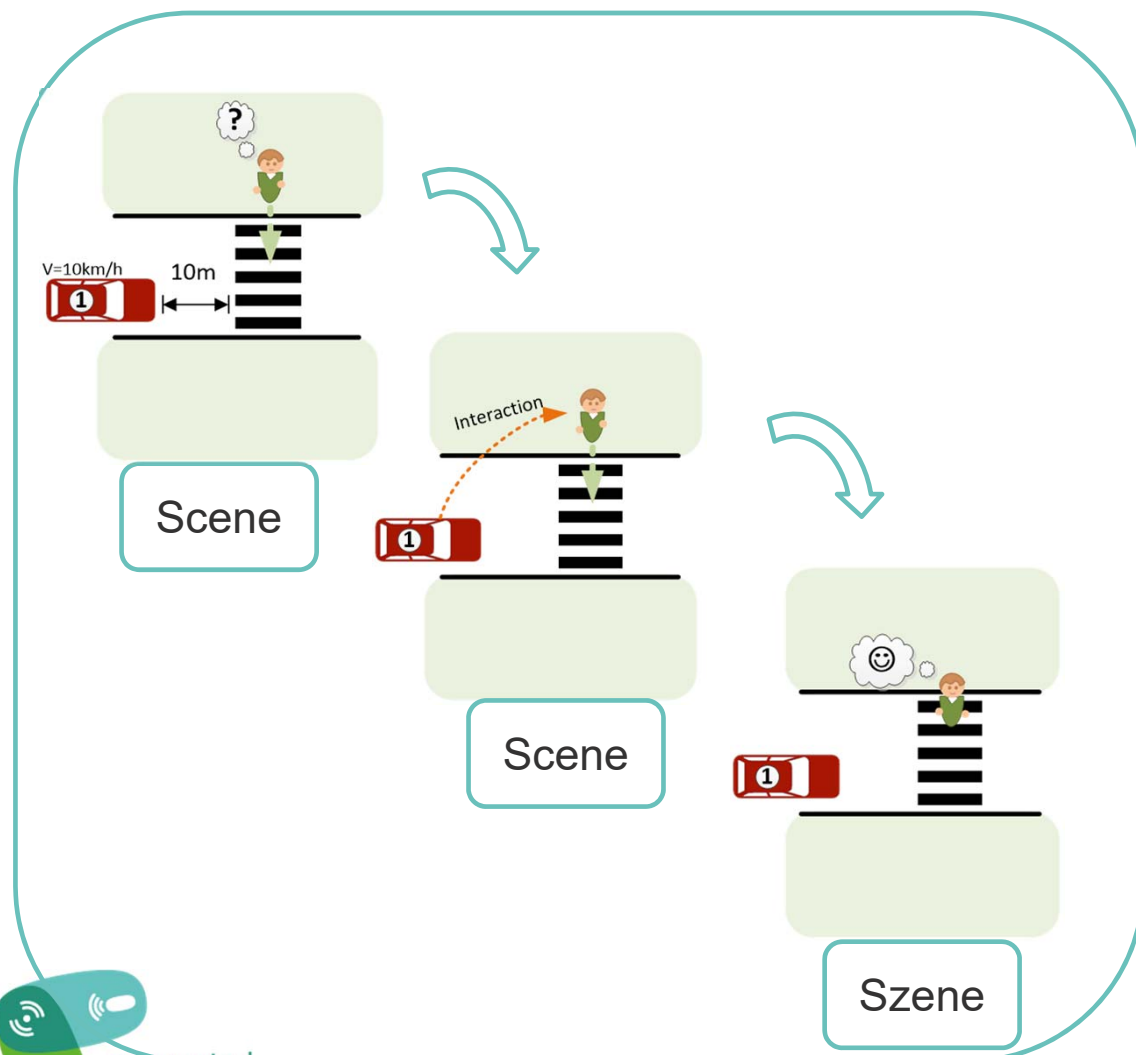
## Use Case – Scenario – Scene



- Persists only several seconds
- Snapshot of the environment including
  - Scenery (Lane network, stationary elements, traffic lights, obstacles)
  - Dynamic elements (cars, road users)
  - All including agents

# Scenario

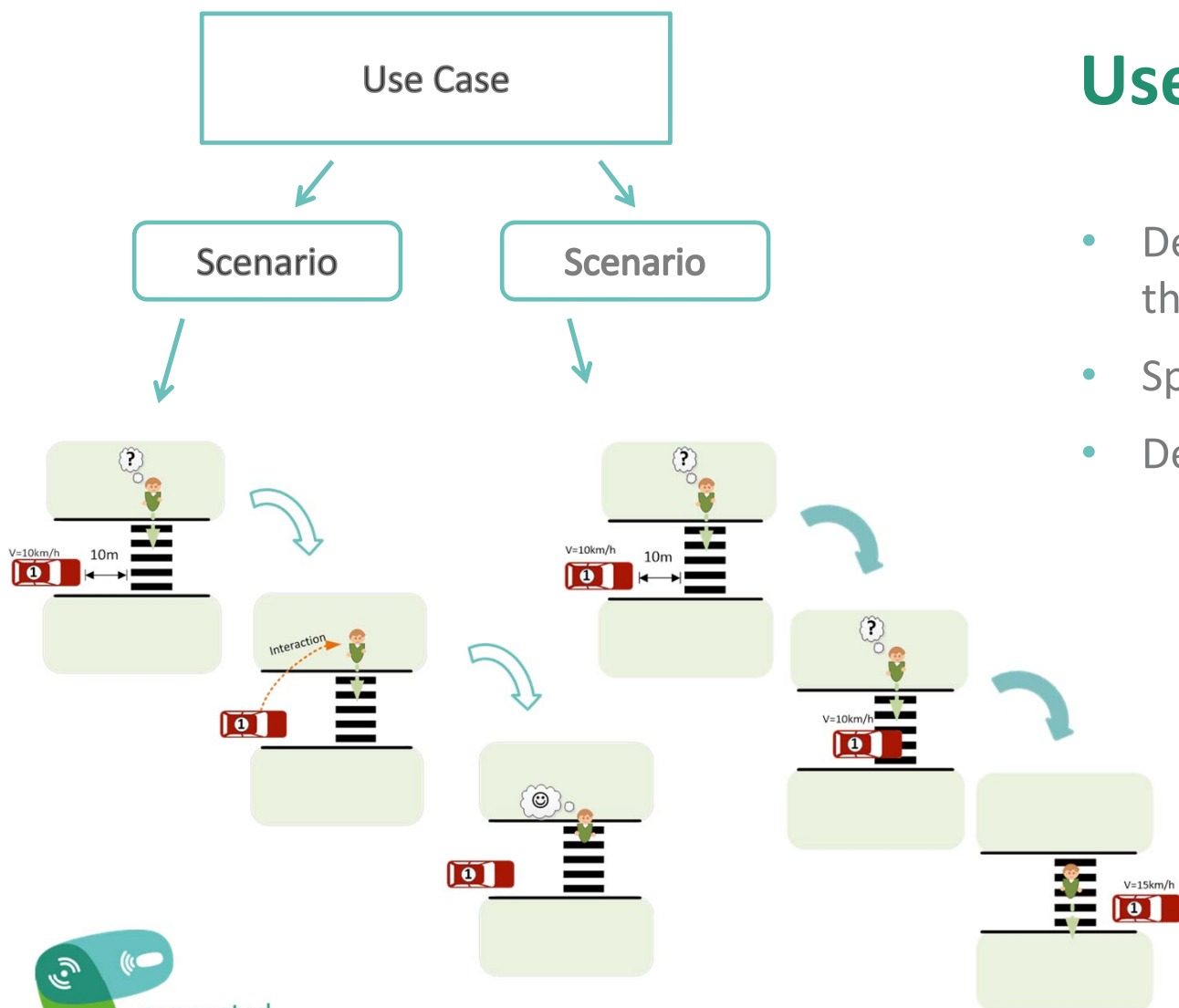
- Temporal development between several scenes
- A sequence of scenes connected by actions & events
- Includes goals of the agents
- Spans a certain amount of time





# Use Case

- Description of the functional range and the desired behaviour
- Specification of system boundaries
- Definition of one or several scenarios

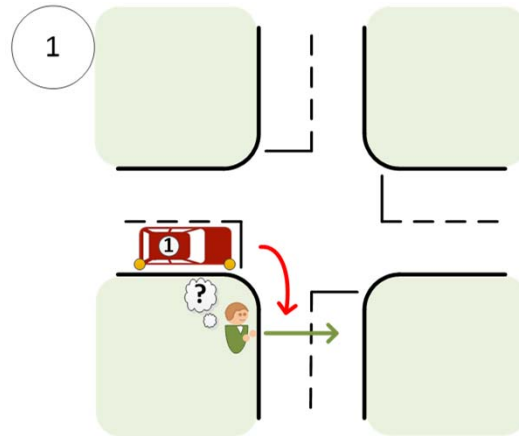


# Must have use cases in interACT

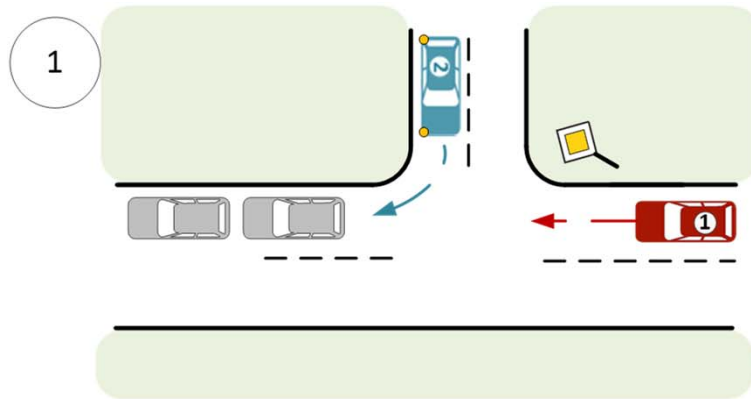
- 1 React to crossing non-motorised TP at crossings without traffic lights
- 2 React to an ambiguous situation at an unsignalised intersection
- 3 React to non-motorised TP at a parking space
- 4 React to vehicles at a parking space

# 1

## React to crossing non-motorised TP at crossings without traffic lights

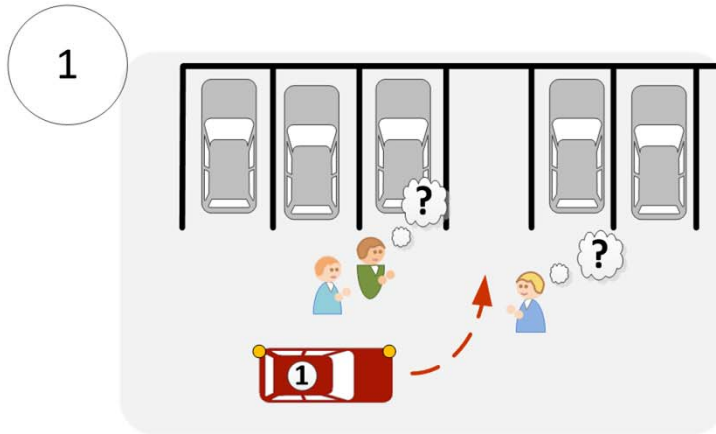


## 2 React to an ambiguous situation at an unsignalised intersection



# 3

## React to non-motorised TP at a parking space



# 4

## React to vehicles at a parking space

